

Sedal

Waterway solutions



The faucet's heart

Faucet Waterways

Kitchen Waterways

- Enable **simplified faucet body casting** and internal architecture.
- Contribute to overall faucet **cost reduction**.
- Manufactured from **hygiene-certified** plastic materials, compliant with current and upcoming European regulatory standards.
- Support **“dry” faucet** and shower solutions, eliminating the need for internal metallic water-contact parts.
- Allow the use of **customized plastic bases** for existing faucet designs, with direct interfaces for flexible hose connections.
- Reduces **time to market** as all hydraulic complexity of the faucet is already designed and tested.
- Standard and **Pull-out / pull-down** versions compatible.
- **M10** and **M8** variants.

Standard Kitchen Faucet



Pull-out Kitchen Faucet



Basin Waterways

- System designed to mount the cartridge from the top
- Designed for Sedal's EN-35 high performance cartridge
- External spout from base
- M10 threads
- Enables no water in contact with metal materials

Basin Faucet



Shower Waterways

Thermostatic Cores

- Unified polymer base
- Two outlet solution (up and down)
- Sedal's TM001 and TM006 range compatible.
- Single lever cartridge versions compatible.
- Integrated solution ready for assembly.
- No contact with metal parts of faucets.
- Materials ready for certifications.

Thermostatic Cores



Mixer Cores



Shower tray with outlets

Piano 3 Outlets



Diverter 4 outlets



Piano 3 Outlets

- Piano version with 3 outlets
- Unified polymer base
- Compatible with Sedal's EX-25 piano cartridge for outlet selection.
- Compatible with Sedal's EN-35 High Performance cartridge for temperature and flow selection.
- Individual outlet selection with up to 3 outlets at the same time.
- Integrated solution ready for assembly.
- Prevent contact with water of metal components.
- Top of the market quality and endurance guaranteed by Sedal.

Diverter 4 Outlets

- Unified polymer base
- Single knob to control multiple outlets.
- Possibility to cover several outlets and use same body for alternative products.
- Compatible with EN-35 TOP short & GD4-35 diverter
- Integrated solution ready for assembly.
- Prevent contact with water of metal components.
- Top of the market quality and endurance guaranteed by Sedal.

Sedal

Tailor Made Waterways

We work closely with customers and partners to develop tailor made waterway solutions, adapting the plastic base, interfaces and outlet configuration to the specific requirements of each faucet or shower design.

As most of the hydraulic complexity is already designed, validated and tested, our customized solutions can simplify casting and internal architecture while helping to shorten time for the product to enter the market.

The result is an integrated, fully tested system, ready for assembly and manufactured with hygiene-certified materials in line with current and upcoming European regulatory standards.

1.

Understanding the Requirements

We start by defining the project scope together with the customer, taking into account technical constraints, interfaces and performance targets.

2.

Concept and co-engineering

Our team develops the waterway concept in close collaboration with the customer, adapting the geometry, outlets and integration points to the specific application.

3.

Design and validation

The hydraulic system is then fully designed and validated to ensure performance, reliability and compliance with the required standards.

4.

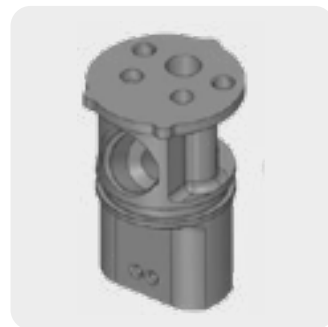
Prototype and testing

We define the project scope together with the customer, including technical constraints, interfaces and performance targets.

5.

Final solution and industrialization

We deliver a complete, ready-to-assemble waterway solution, fully validated and optimized for manufacturing. Designed to integrate reliably with the faucet architecture, it helps simplify assembly, reduce production complexity and support faster industrialization. The result is a robust solution that maintains consistent performance across different applications and configurations.



Sedal