

Sedal

TOP Range



The faucet's heart

Main Technologies



Temperature Ring (TR)

Limits handle rotation to control hot water and prevent scalding. Adjustable after installation, it also improves energy efficiency by reducing unnecessary hot water use.



EcoFlow

Regulates water flow in the cartridge for stable performance, ensuring consistent mixing and reducing water use.



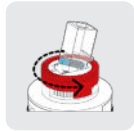
Flow limiter (N)

Controls maximum water flow by limiting lever angle with an adjustable screw. This enables precise water use while keeping a comfortable experience.



High Flow

Designed to deliver higher water volume with optimized flow, ensuring strong, consistent performance for demanding installations.



Temperature Ring with Flow limiter (TRN)

Combines temperature and flow control, limiting heat and handle opening to save water while ensuring safe use. Adjustable after installation.



Low Pressure

Designed for low-pressure systems, ensuring smooth, consistent flow through reduced resistance.



Hard Point (Due) C2

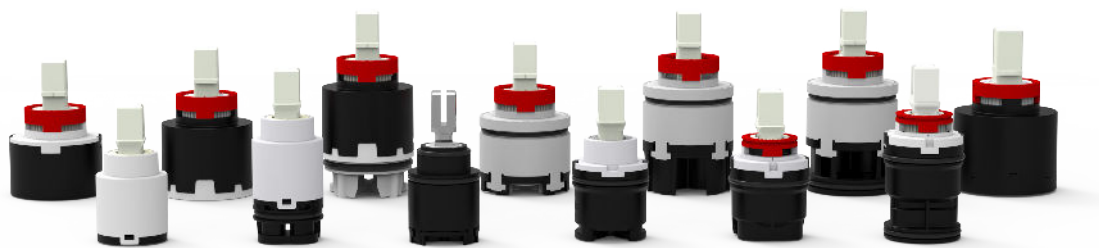
Introduces slight resistance at mid-flow to encourage moderate use and reduce consumption, while still allowing full flow when needed.



High Pressure

Built for high pressure, with reinforced components ensuring durability, smooth operation, and long-term reliable performance.

Versions



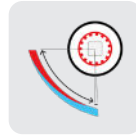
	Type		Opening			Technologies		
	Regular	Upper Sealing	Standard	Cold	Cold Mirror	Temperature Ring (TR)	Temperature & Flow Limiters (TRN)	Due
EN-25 TOP	Short base (S/D) Long Base (C/D)		x	x	x			x
EX-25 TOP		EX	x					
EX-27 TOP		EX	x	x				x
EX-28 TOP		EX	x	x	x	x	x	x
CC-28 TOP		CC Direct plug in	x	x		x		
EN-35 TOP	Short base (S/D) Long Base (C/D)		x	x	x	x	x	x
EX-35 TOP		EX	x	x	x	x	x	x
G-35 TOP		G	x	x	x	x	x	x
CC-35 TOP		CC Direct plug in	x	x		x	x	x
EN-40 TOP	Short base (S/D) Long Base (C/D)		x			x	x	x

Openings



Standard Opening

In standard use, lifting the central lever mixes hot and cold water, with temperature adjusted by moving it to either side.



Cold Opening C3

In cold opening, the central lever gives only cold water; hot is activated only when turned, reducing consumption and improving efficiency.



Cold-Mirror Opening C3

Cold-Mirror opening delivers cold water in the center, but reverses the hot direction, improving ergonomics and vertical alignment in kitchen faucets.

Featuring

Higher Flow Rate

TOP delivers up to 5% higher flow rate than the average cartridge in its category, outperforming its closest competitors while ensuring a powerful and consistent water flow.

Outstanding Comfort

TOP provides exceptionally smooth and precise operation, even under hot water conditions, delivering up to 11% greater user comfort compared to the market average.

Best-in-Class Sensitivity

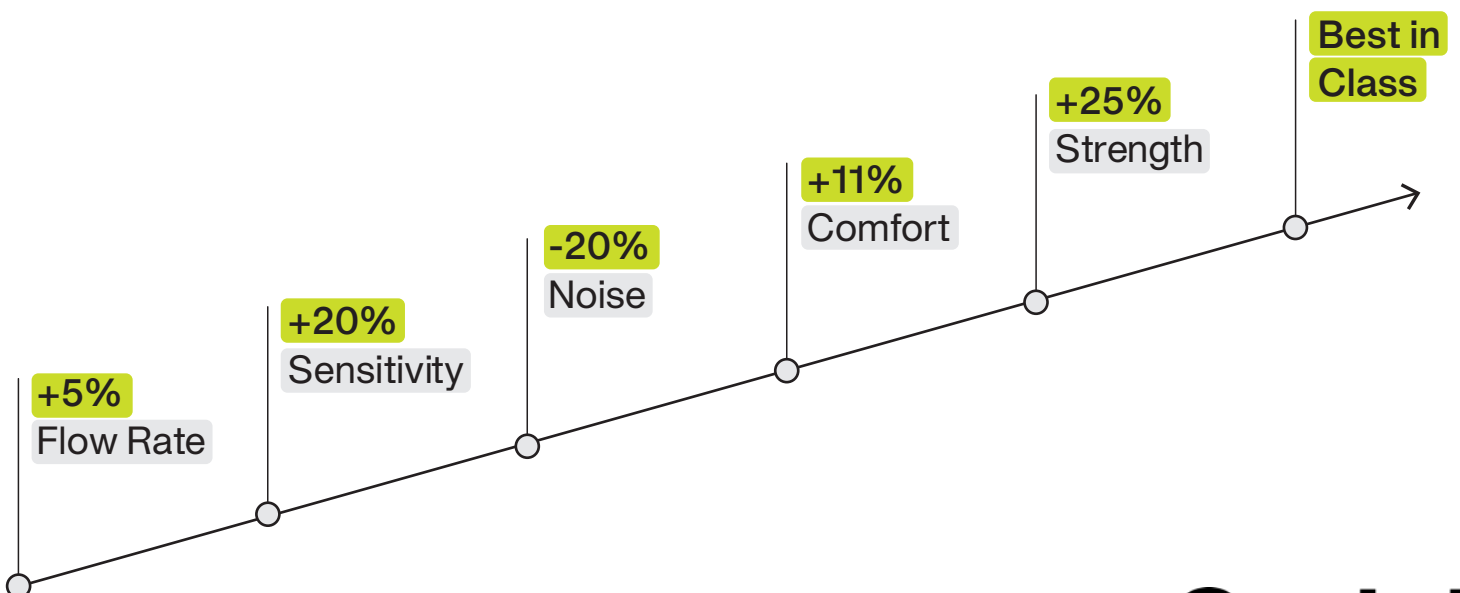
Engineered for superior responsiveness, TOP offers up to 10% better sensitivity than its closest competitor and more than 20% higher sensitivity than standard cartridges on the market.

Reduced Noise Level

TOP achieves excellent acoustic performance, meeting NF Class 3 requirements (<15 dB) and operating up to 20% quieter than the average cartridge in its segment.

Enhanced Mechanical Strength

Designed for durability and reliability, TOP provides up to 25% greater mechanical strength than standard 35 mm cartridges, ensuring long-lasting performance.



Sedal

Technical Specifications

	EN-25 TOP	EX-25 TOP	EX-27 TOP	EX-28 TOP	CC-28 TOP
Nut torque/Pitch M1,5	7 - 8 Nm	7 - 8 Nm	7 - 8 Nm	7 - 8 Nm	7 - 8 Nm
Opening angle	22,5°	0 - 23° / 12,5°-12,5°	22°	22°	22°
Rotation angle	100°	100°	100°	90°	90°
Working pressure (recommended)	1 - 5 bar	1 - 5 bar	1 - 5 bar	1 - 5 bar	1 - 5 bar
Burst pressure	>50 bar	>50 bar	>50 bar	>35 bar	>35 bar
Life cycle- ASME	1.500.000 cycles	1.500.000 cycles	1.500.000 cycles	1.500.000 cycles	1.000.000 cycles
EN 817 (NF-077 U3)	175.000 cycles	175.000 cycles	175.000 cycles	175.000 cycles	175.000 cycles
GB-18145	210.000 cycles	210.000 cycles	210.000 cycles	140.000 cycles	140.000 cycles
Sensitivity ⁽¹⁾ (EN 817)	>12°	>12°	>16°	>12°	>12°
Fidelity ⁽¹⁾ (NF-077)	<5°	<5°	<5°C	<5°C	<5°C
Constant 63 °C & 50 °C (6 l/min - 3 l/min)	<4 °C - <6 °C	<4 °C - <6 °C	<4°C - <6°C	<4°C - <6°C	<4°C - <6°C
Max. hot water limit	90°C	90°C	90°C	90°C	90°C
Free flow ⁽¹⁾	14,8 l/m	12,30 l/m	12,5 l/min	14 l/min	13,4 l/min
Open-close	0,20 - 0,40 Nm	0,15 - 0,40 Nm	0,15 - 0,30 Nm	0,2 - 0,4 Nm	0,15 - 0,3 Nm
Turn left-right	0,15 - 0,35 Nm	0,10 - 0,40 Nm	0,15 - 0,30 Nm	0,15 - 0,3 Nm	0,15 - 0,3 Nm
Group I EN 817 Class A2/A3 NF077	Group I <20 dB	Group I <20 dB	Group I <20 dB	Group I <20 dB	Group I <20 dB

	EN-35 TOP	EX-35 TOP	G-35 TOP	CC-35 TOP	EN-40 TOP
Nut torque/Pitch M1,5	10 - 12 Nm	10 - 12 Nm	10 - 12 Nm	10 - 12 Nm	10 - 12 Nm
Opening angle	23°	23°	23°	23°	25°
Rotation angle	100°	100°	100°	100°	110°
Working pressure (recommended)	1 - 5 bar	1 - 5 bar	1 - 5 bar	1 - 5 bar	1 - 5 bar
Burst pressure	>50 bar	>50 bar	>50 bar	>50 bar	>50 bar
Life cycle- ASME	1.500.000 cycles	1.500.000 cycles	1.500.000 cycles	1.500.000 cycles	1.500.000 cycles
EN 817 (NF-077 U3)	175.000 cycles	175.000 cycles	175.000 cycles	175.000 cycles	175.000 cycles
GB-18145	210.000 cycles	210.000 cycles	210.000 cycles	210.000 cycles	210.000 cycles
Sensitivity ⁽¹⁾ (EN 817)	>12°	>12°	>12°	>12°	>12°
Fidelity ⁽¹⁾ (NF-077)	<5°C	<5°C	<5 °C	<5 °C	<5 °C
Constant 63 °C & 50 °C (6 l/min - 3 l/min)	<4°C - <6°C	<4°C - <6°C	<4°C - <6°C	<4°C - <6°C	<4°C - <6°C
Max. hot water limit	90°C	90 °C	90 °C	90 °C	90 °C
Free flow ⁽¹⁾	28 l/min	27,3 l/min	27,7 l/min	26 l/min	44 l/min
Open-close	0,20 - 0,40 Nm	0,20 - 0,40 Nm	0,20 - 0,40 Nm	0,20 - 0,40 Nm	0,2 - 0,4 Nm
Turn left-right	0,20 - 0,40 Nm	0,20 - 0,40 Nm	0,20 - 0,40 Nm	0,20 - 0,40 Nm	0,2 - 0,4 Nm
Group I EN 817 Class A2/A3 NF077	Group I <20 dB	Group I <20 dB	Group I <20 dB	Group I <20 dB	Group I <20 dB

-Hammer test NF-077.

-High temp. pressure test AS-NZS

⁽¹⁾ Free flow @ 3 bar

Tested with proprietary fixtures at SEDAL lab. (1) Considering restrictor & faucet body type

Get access to the complete and latest product technical data

